



PIPE INSPECTION&REPAIR EXPERT

# PIPE CCTV INSPECTION ROBOT

**X5-HT**

- Digital high definition
- Strong power to overcome obstacles
- Field evaluation report
- Wireless control and transmission
- Long distance inspection





## PRODUCT SPECIFICATIONS

OD range : DN300 up to DN 800mm

Cable length : 150m

Voltage : AC220V (AC100V)

Drive voltage : 48V

Electrical current : 1A (2A)

Motor : 2x90W

View angle :  $\pm 135^\circ$

Storage : 128G

Sensitivity to light : 0.1Lux

Resolution : 2.1 Megapixels (1920\*1080P)

Zoom : 10xoptical, 12xdigital

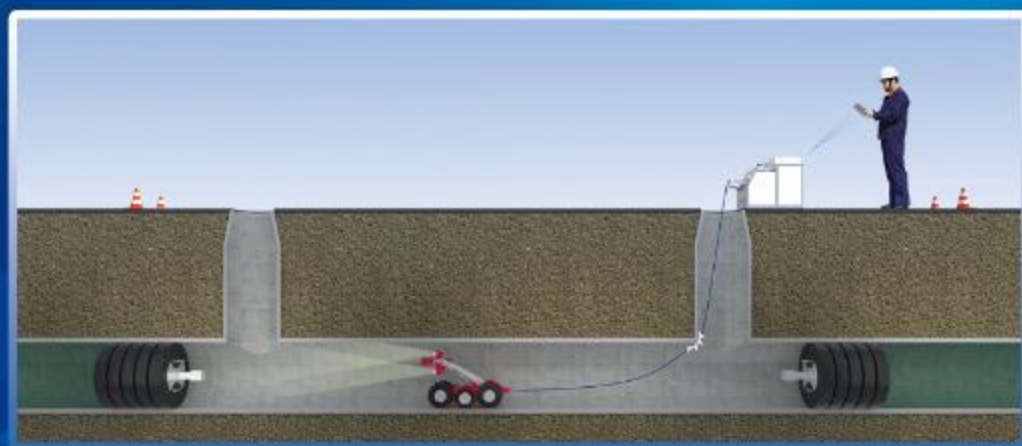
LED : 48W (LED)

Crawler dimensions : 480x177x182mm

Cable reel dimensions : 570x395x475mm

Crawler weight : 16.5kg

Cable reel weight : 33.5kg



Wuhan Easy-Sight Technology Co.,Ltd

Address: No.9-2, Wudayuan No.1 Road, GEO OFFICE, Donghu High-tech Development Zone, Wuhan, Hubei, China

Tel: +86 18871858099

Email: [sales@easysight.cn](mailto:sales@easysight.cn)

Website: [www.pipedetect.com](http://www.pipedetect.com)